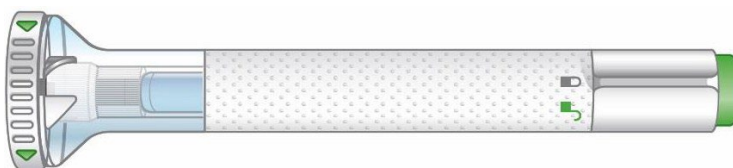


## Instructions for use

### Taltz Solution for Injection in Pre-filled Pen 80 mg/ml

Ixekizumab



**Before you use the Taltz pre-filled pen, read and carefully follow all the step-by-step instructions.**

Before using your pre-filled pen:

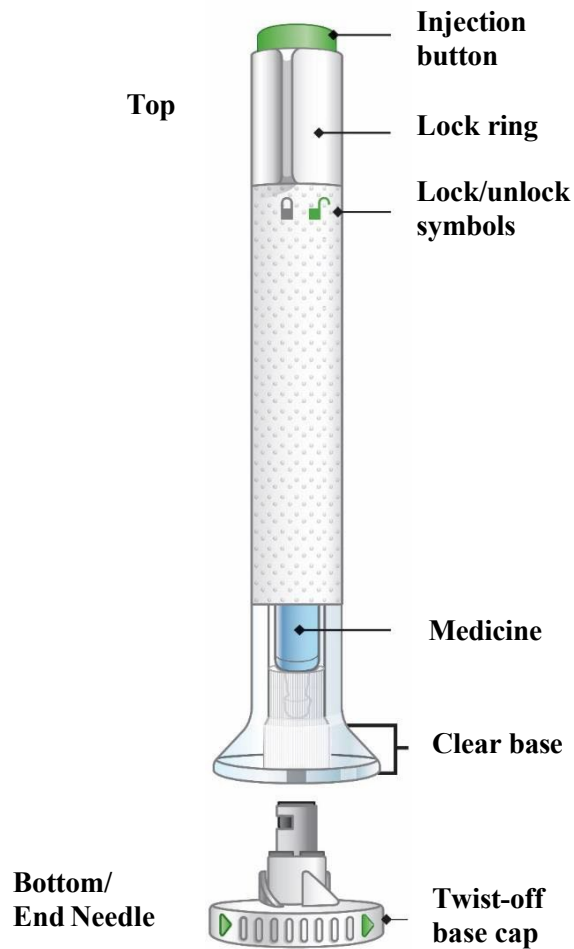
#### **Important points to know**

- Before you use the Taltz pre-filled pen, read and carefully follow all the step-by-step instructions. Keep the Instructions for Use and refer to them as needed.
- The pre-filled pen contains 1 dose of Taltz. The pre-filled pen is for ONE-TIME USE ONLY.
- The pre-filled pen must not be shaken.
- The pre-filled pen contains glass parts. Handle it carefully. If you drop it on a hard surface, do not use it. Use a new pre-filled pen for your injection.
- Your doctor, pharmacist or nurse may help you decide where on your body to inject your dose.
- Read the Taltz Package Leaflet inside this box to learn more about your medicine.

#### **INSTRUCTIONS FOR USE**

**Before you use the Taltz pre-filled pen, read and carefully follow all the step-by-step instructions.**

## Guide to the parts



### 1 GET READY

- 1a** Take the pre-filled pen from the refrigerator. Leave the base cap on until you are ready to inject. **Wait 30 minutes** to let the pre-filled pen warm to room temperature before you use it.

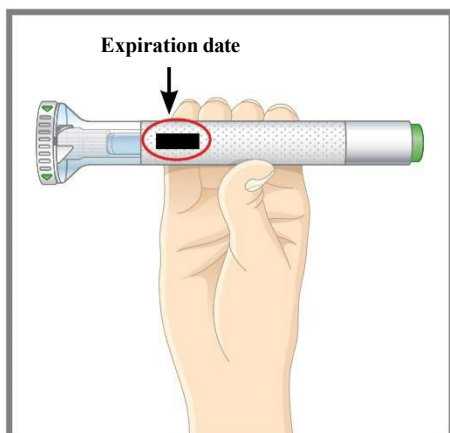
**DO NOT** use any heat sources to warm the medicine, for example: a microwave, hot water, or direct sunlight.



- 1b** Gather the supplies for your injection:

- 1 alcohol wipe
- 1 cotton ball or piece of gauze
- 1 sharps container for disposal of pre-filled pen

1c



**Inspect the pre-filled pen.** Check the label. Make sure the name Taltz appears on the label.

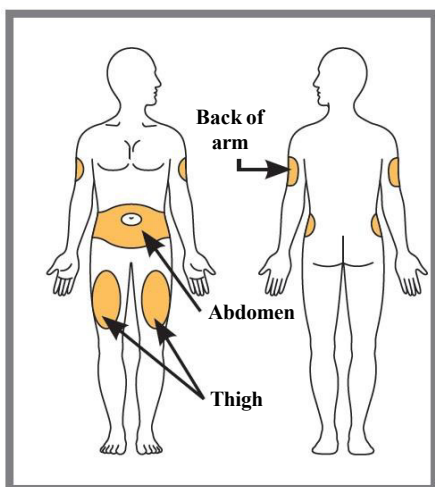
The medicine inside should be clear. Its colour may vary from colourless to slightly yellow.

If you see any of the following, **DO NOT USE** the pre-filled pen, and dispose of it as directed:

- It is past the expiry date.
- It looks damaged.
- The medicine is cloudy, is distinctly brown, or has small particles.

1d **Wash your hands before you inject your medicine.**

1e



**Choose your injection site.**

You may inject in your abdomen (stomach area), in your thigh, or in the back of your arm. To inject in your arm, you will need someone to help you.

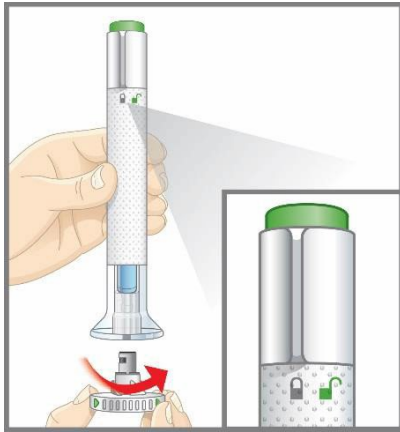
**DO NOT** inject into areas where the skin is tender, bruised, red, or hard or where you have scars or stretch marks. **DO NOT** inject within 2.5 centimetres of the navel (belly button).

**Alternate your injection sites. DO NOT** inject in the exact same spot every time. For example, if your last injection was in your left thigh, your next injection should be in your right thigh, your abdomen, or the back of either arm.

1f **Prepare your skin.** Clean your skin with an alcohol wipe. Let the injection site dry naturally before you inject your medicine.

## 2 INJECT

2a



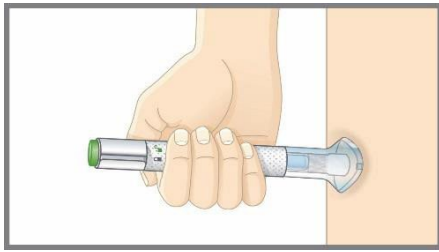
**Make sure the lock ring is in the lock position.**

Leave the base cap on until you are ready to inject. **DO NOT** touch the needle.

**Twist off the base cap.**

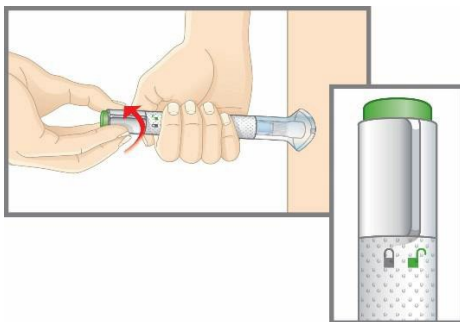
Throw the base cap in the bin. You will not need to put the base cap back on—doing so could damage the needle or cause you to injure yourself by accident.

2b



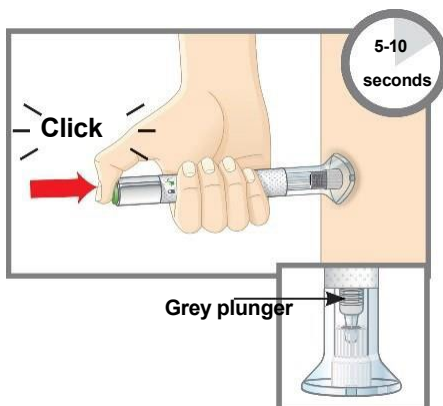
**Place the clear base flat and firmly against your skin.**

2c



**Keep the base on your skin, and then turn the lock ring to the unlock position.** You are now ready to inject.

2d



**Press the green injection button.** There will be a loud click.

**Keep holding the clear base firmly against your skin.** You will hear a second loud click in about 5 to 10 seconds after the first one. **The second loud click tells you that your injection is complete.**

You will also see the grey plunger at the top of the clear base.

Remove the pre-filled pen from your skin.

Press a cotton ball or gauze over the injection site. **DO NOT** rub the injection site, as this may cause bruising. You may have slight bleeding. This is normal.

### 3 FINISH

3a



**Dispose of the pre-filled pen.**

**DO NOT** put the base cap back on. Dispose of the pre-filled pen in a sharps container or as directed by your doctor, pharmacist or nurse.

#### **When you dispose of the pre-filled pen and the sharps container:**

- Dispose of the pen in a sharps container or as directed by your doctor, pharmacist or nurse.
- Do not recycle the filled sharps container.
- Ask your doctor, pharmacist or nurse about how to dispose of medicines you no longer use.

#### **Safety tips**

- If you have questions or need help with your pre-filled pen, call your doctor, pharmacist or nurse.
- If you have vision problems, **DO NOT** use the pre-filled pen without help from a person trained to use it.
- Keep the pre-filled pen out of the reach and sight of children.
- If you do not have a sharps container, ask your doctor, pharmacist or nurse where you can get one.

## Commonly asked questions

**Q. What if I see air bubbles in the pre-filled pen?**

**A.** It is normal to have air bubbles in the pre-filled pen. Taltz is injected under the skin (subcutaneous injection). Air bubbles are not a problem in this type of injection. They will not harm you or affect your dose.

**Q. What if there is a drop of liquid on the tip of the needle when I remove the base cap?**

**A.** It is okay to see a drop of liquid on the tip of the needle. This will not harm you or affect your dose.

**Q. What if I unlocked the pre-filled pen and pressed the green injection button before I twisted off the base cap?**

**A.** Do not remove the base cap. Contact your doctor, pharmacist or nurse.

**Q. Do I need to hold the injection button down until the injection is complete?**

**A.** This is not necessary, but it may help you keep the pre-filled pen steady and firm against your skin.

**Q. What if the needle did not retract after my injection?**

**A.** Do not touch the needle or replace the base cap. Dispose of the pre-filled pen in a closable, puncture-resistant sharps container. Contact your doctor, pharmacist or nurse.

**Q. What if I heard more than 2 clicks during my injection—2 loud clicks and a soft one. Did I get my complete injection?**

**A.** Some patients may hear a soft click right before the second loud click. That is normal. Do not remove the pre-filled pen from your skin until you hear the second loud click.

**Q. How can I tell if my injection is complete?**

**A.** After you press the green injection button, you will hear 2 loud clicks. The second click tells you that your injection is complete. You will also see the grey plunger at the top of the clear base.

**Q. What if the pre-filled pen is left at room temperature for longer than 30 minutes?**

**A.** If needed, the pre-filled pen may be left out of the fridge at temperature not above 30 °C for up to 5 days if protected from direct sunlight. Taltz should be discarded if not used within the 5 day period at room temperature.

**Read the full Package leaflet for Taltz inside this box to learn more about your medicine.**

**Product Owner**

Eli Lilly and Company, Indianapolis, IN 46285, USA

Date of revision of text: 9 March 2023