

*For the Use of a Registered Medical Practitioner Only*

## **PRESCRIBING INFORMATION**

CILENTRA 10 ESCITALOPRAM OXALATE TABLET USP 10 MG

CILENTRA 20 ESCITALOPRAM OXALATE TABLET USP 20 MG

### **COMPOSITION**

CILENTRA 10 ESCITALOPRAM OXALATE TABLET USP 10 MG

Each film coated tablet contains

Escitalopram oxalate equivalent to

Escitalopram ..... 10 mg.

CILENTRA 20 ESCITALOPRAM OXALATE TABLET USP 20 MG

Each film coated tablet contains

Escitalopram oxalate equivalent to

Escitalopram ..... 20 mg.

**Excipients:** Microcrystalline Cellulose, Lactose monohydrate, Copovidone, Maize starch, Purified water, Cellulose, Microcrystalline & Silica, Colloidal Anhydrous, Croscarmellose Sodium, Purified Talc, Colloidal anhydrous silica, Magnesium Stearate, Opadry OY-S-58910 (White)

Opadry OY-S-58910 White is used as coating agent and contains Hypromellose, Titanium dioxide, PEG/Macrogol and Talc

Tablets are packed in cold form blister packs made of Oriented Polyamide/ Aluminium/ PVC film with Aluminium blister foil.

### **DESCRIPTION <sup>1</sup>**

#### **10mg**

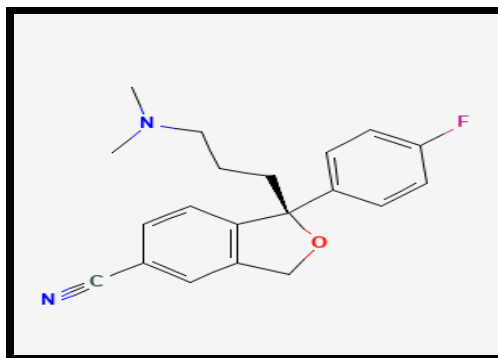
White to Off-white, oval biconvex, film coated tablets debossed with 'E' and '8' on either side of the eye score line on one side and plain on other side.

#### **20mg**

White to Off-white, oval biconvex, film coated tablets debossed with 'E' and '9' on either side of the eye score line on one side and plain on other side

The 10 and 20 mg tablets can be divided into equal doses.

**CILENTRA** contains active substance escitalopram, which is the S-enantiomer of citalopram. Belongs to a class of drugs known as selective serotonin reuptake inhibitors. The molecular formula for escitalopram oxalate is  $C_{22}H_{23}FN_2O_5$  and the molecular weight is 414.4. Chemically, escitalopram is (1*S*)-1-[3-(dimethylamino) propyl]-1-(4-fluorophenyl)-3*H*-2-benzofuran-5-carbonitrile;oxalic acid. The structural formula of escitalopram is presented below.



**Structural formula of Escitalopram**

## INDICATIONS <sup>2</sup>

- Treatment of major depressive episodes.
- Treatment of panic disorder with or without agoraphobia.
- Treatment of generalised anxiety disorder.
- Treatment of obsessive-compulsive disorder.

## DOSE AND METHOD OF ADMINISTRATION <sup>2</sup>

Safety of daily doses above 20 mg has not been demonstrated.

**CILENTRA** is administered as a single daily dose and may be taken with or without food.

### Major depressive episodes

Usual dosage is 10 mg once daily. Depending on individual patient response, the dose may be increased to a maximum of 20 mg daily.

Usually 2-4 weeks are necessary to obtain antidepressant response. After the symptoms resolve, treatment for at least 6 months is required for consolidation of the response.

### Panic disorder with or without agoraphobia

An initial dose of 5 mg is recommended for the first week before increasing the dose to 10 mg daily. The dose may be further increased, up to a maximum of 20 mg daily, dependent on individual patient response.

Maximum effectiveness is reached after about 3 months. The treatment lasts several months.

#### Generalised anxiety disorder

Usual dosage is 10 mg once daily. Depending on individual patient response, the dose may be increased to a maximum of 20 mg daily.

Treatment for 3 months is recommended to consolidate response. Long-term treatment of responders for 6 months has been shown to prevent relapse and can be considered on an individual basis; treatment benefits should be re-evaluated at regular intervals.

#### Obsessive-compulsive disorder (OCD)

Usual dosage is 10 mg once daily. Depending on individual patient response, the dose may be increased to 20 mg daily.

Long-term treatment has been studied for a maximum of 40 weeks. Patients responding to a 16-week open-label treatment phase were randomized to a 24-week placebo-controlled relapse prevention phase, receiving 10 or 20 mg escitalopram daily. As OCD is a chronic disease, patients should be treated for a sufficient period to ensure that they are symptom free. This period may be several months or even longer.

#### Elderly patients (> 65 years of age)

Initial treatment with half the usually recommended dose and a lower maximum dose should be considered (see **PHARMACODYNAMIC AND PHARMACOKINETIC PROPERTIES; Pharmacokinetics**).

#### Children and adolescents (<18 years)

**CILENTRA** should not be used in the treatment of children and adolescents under the age of 18 years (see **WARNINGS AND PRECAUTIONS**).

#### Reduced renal function

Dosage adjustment is not necessary in patients with mild or moderate renal impairment. Caution is advised in patients with severely reduced renal function ( $CL_{CR}$  less than 30 ml/min.) (see **PHARMACODYNAMIC AND PHARMACOKINETIC PROPERTIES; Pharmacokinetics**).

#### Reduced hepatic function

An initial dose of 5 mg daily for the first two weeks of treatment is recommended. Depending on individual patient response, the dose may be increased to 10 mg daily (see **PHARMACODYNAMIC AND PHARMACOKINETIC PROPERTIES; Pharmacokinetics**).

#### Poor metabolisers of CYP2C19

For patients who are known to be poor metabolisers with respect to CYP2C19, an initial dose of 5 mg daily during the first two weeks of treatment is recommended. Depending on individual patient response, the dose may be increased to 10 mg daily (see **PHARMACODYNAMIC AND PHARMACOKINETIC PROPERTIES; Pharmacokinetics**).

#### Discontinuation symptoms

When stopping treatment with **CILENTRA** the dose should be gradually reduced over a period of at least one to two weeks in order to avoid possible discontinuations symptoms (see **WARNINGS AND PRECAUTIONS** and **UNDESIRABLE EFFECTS**).

### **USE IN SPECIAL POPULATIONS <sup>2</sup>**

#### *Pregnancy*

For escitalopram, only limited clinical data are available regarding exposed pregnancies. Animal studies have shown reproductive toxicity (see **PRECLINICAL SAFETY**). **CILENTRA** should not be used during pregnancy unless clearly necessary and only after careful consideration of the risk/ benefit.

Newborns should be observed if maternal use of escitalopram continues into the later stages of pregnancy, particularly in the third trimester. If escitalopram is used until or shortly before birth, discontinuation effects in the newborn are possible.

The following symptoms may occur in the newborn after maternal SSRI/SNRI use in later stages of pregnancy: respiratory distress, cyanosis, apnoea, seizures, temperature instability, feeding difficulty, vomiting, hypoglycaemia, hypertonia, hypotonia, hyperreflexia, tremor, jitteriness, irritability, lethargy, constant crying, somnolence and difficulty sleeping. These symptoms could be due to either discontinuation effects or excess serotonergic activity. In a majority of instances, such complications begin immediately or soon (<24 hours) after delivery.

Escitalopram should not be used during pregnancy unless clearly needed and after careful consideration of the risk/benefit ratio.

Epidemiological data have suggested that the use of SSRIs in pregnancy, particularly in late pregnancy, may increase the risk of persistent pulmonary hypertension in the newborn (PPHN). The observed risk was approximately 5 cases per 1000 pregnancies. In the general population 1 to 2 cases of PPHN per 1000 pregnancies occur.

Observational data reports indicate an increased risk (less than 2-fold) of postpartum haemorrhage following SSRI/SNRI exposure within the month prior to birth (see **WARNINGS AND PRECAUTIONS, UNDESIRABLE EFFECTS**).

#### Breast-feeding

It is expected that escitalopram will be excreted into human milk and breastfeeding is not recommended during the treatment.

### **CONTRAINDICATIONS<sup>2</sup>**

- Hypersensitivity to the active substance or to any of the excipients, listed in **COMPOSITION**.
- Concomitant treatment with non-selective, irreversible monoamine oxidase inhibitors (MAO-inhibitors) (see **DRUG INTERACTIONS**).
- Concomitant treatment with pimozide.

### **WARNINGS AND PRECAUTIONS<sup>2</sup>**

Antidepressants should not be used in the treatment of children and adolescents under age of 18 years. Suicide related behaviours (suicide attempt and suicidal thoughts), and hostility (predominately aggression, oppositional behaviour and anger) were more frequently observed in clinical trials among children and adolescents treated with antidepressants compared to those treated with placebo. If, based on clinical need, a decision to treat is nevertheless taken, the patient should be carefully monitored for the appearance of suicidal symptoms. In addition, long term safety data in children and adolescents concerning growth, maturation and cognitive and behavioural development are lacking.

The following special warnings and precautions apply to the therapeutic class of SSRIs (Selective Serotonin Re-uptake Inhibitors).

#### Paradoxical anxiety

Some patients with panic disorder may experience increased anxiety symptoms at the beginning of treatment with antidepressants. This paradoxical reaction usually subsides within the first two weeks of treatment. A low starting dose is advised to reduce the likelihood of an anxiogenic effect (see **DOSE AND METHOD OF ADMINISTRATION**).

#### Seizures

Escitalopram should be discontinued if a patient develops seizures for the first time, or if there is an increase in seizure frequency (in patients with a previous diagnosis of epilepsy). SSRIs should be avoided in patients with unstable epilepsy, and patients with controlled epilepsy should be closely monitored.

#### Mania

SSRIs should be used with caution in patients with a history of mania/hypomania. SSRIs should be discontinued in any patient entering a manic phase.

#### Diabetes

In patients with diabetes, treatment with an SSRI may alter glycaemic control. Insulin and/or oral hypoglycaemic dosage may need to be adjusted.

#### Suicide/Suicidal thoughts or clinical worsening

Depression is associated with an increased risk of suicidal thoughts, self harm and suicide (suiciderelated events). This risk persists until significant remission occurs.

As improvement may not occur during the first few weeks or more of treatment, patients should be closely monitored until such improvement occurs. It is general clinical experience that the risk of suicide may increase in the early stages of recovery.

Other psychiatric conditions for which escitalopram is prescribed can also be associated with an increased risk of suicide-related events. In addition, these conditions may be co-morbid with major depressive disorder. The same precautions observed when treating patients with major depressive disorder should therefore be observed when treating patients with other psychiatric disorders. Patients with a history of suicide-related events, or those exhibiting a significant degree of suicidal ideation prior to commencement of treatment, are known to be at greater risk of suicidal thoughts or suicide attempts, and should receive careful monitoring during treatment. A meta-analysis of placebo controlled clinical trials of antidepressant drugs in adult patients with psychiatric disorders showed an increased risk of suicidal behaviour with antidepressants compared to placebo in patients less than 25 years old. Close supervision of patients and in particular those at high risk should accompany drug therapy especially in early treatment

and following dose changes. Patients (and caregivers of patients) should be alerted about the need to monitor for any clinical worsening, suicidal behaviour or thoughts and unusual changes in behaviour and to seek medical advice immediately if these symptoms present.

#### Akathisia/psychomotor restlessness

The use of SSRIs/SNRIs has been associated with the development of akathisia, characterized by a subjectively unpleasant or distressing restlessness and need to move often accompanied by an inability to sit or stand still. This is most likely to occur within the first few weeks of treatment. In patients who develop these symptoms, increasing the dose may be detrimental.

#### Hyponatraemia

Hyponatraemia, probably due to inappropriate antidiuretic hormone secretion (SIADH), has been reported rarely with the use of SSRIs and generally resolves on discontinuation of therapy. Caution should be exercised in patients at risk, such as the elderly, or patients with cirrhosis, or if used in combination with other medications which may cause hyponatraemia.

#### Haemorrhage

There have been reports of cutaneous bleeding abnormalities, such as ecchymoses and purpura, with SSRIs. SSRIs/SNRIs may increase the risk of postpartum haemorrhage (see **USE IN SPECIAL POPULATIONS, UNDESIRABLE EFFECTS**). Caution is advised in patients taking SSRIs, particularly with concomitant use of oral anticoagulants; medicinal products known to affect platelet function (e.g. atypical antipsychotics and phenothiazines, most tricyclic antidepressants, acetylsalicylic acid and nonsteroidal anti-inflammatory medicinal products (NSAIDs), ticlopidine and dipyridamole); and in patients with known bleeding tendencies.

#### ECT (electroconvulsive therapy)

There is limited clinical experience of concurrent administration of SSRIs and ECT; therefore, caution is advisable.

#### Reversible, selective MAO-A inhibitors

The combination of escitalopram with MAO-A inhibitors is generally not recommended due to the risk of onset of a serotonin syndrome (see **DRUG INTERACTIONS**).

#### Serotonin syndrome

Caution is advisable if escitalopram is used concomitantly with medicinal products with serotonergic effects such as triptans (including sumatriptan), opioids (including

tramadol), and tryptophan. In rare cases, serotonin syndrome has been reported in patients using SSRIs concomitantly with serotonergic medicinal products. A combination of symptoms, such as agitation, tremor, myoclonus and hyperthermia may indicate the development of this condition. If this occurs, treatment with the SSRI and the serotonergic medicinal product should be discontinued immediately and symptomatic treatment initiated.

#### St. John's Wort

Concomitant use of SSRIs and herbal remedies containing St. John's Wort (*Hypericum perforatum*) may result in an increased incidence of adverse reactions (see **DRUG INTERACTIONS**).

#### Angle-Closure Glaucoma

SSRIs including escitalopram may have an effect on pupil size resulting in mydriasis. This mydriatic effect has the potential to narrow the eye angle resulting in increased intraocular pressure and angle-closure glaucoma, especially in patients pre-disposed. Escitalopram should therefore be used with caution in patients with angle-closure glaucoma or history of glaucoma.

#### Discontinuation symptoms seen when stopping treatment

Discontinuation symptoms when stopping treatment are common, particularly if discontinuation is abrupt (see **UNDESIRABLE EFFECTS**). In clinical trials adverse events seen on treatment discontinuation occurred in approximately 25% of patients treated with escitalopram and 15% of patients taking placebo.

The risk of discontinuation symptoms may be dependent on several factors including the duration and dose of therapy and the rate of dose reduction. Dizziness, sensory disturbances (including paraesthesia and electric shock sensations), sleep disturbances (including insomnia and intense dreams), agitation or anxiety, nausea and/or vomiting, tremor, confusion, sweating, headache, diarrhoea, palpitations, emotional instability, irritability, and visual disturbances are the most commonly reported reactions. Generally, these symptoms are mild to moderate, however, in some patients they may be severe in intensity. They usually occur within the first few days of discontinuing treatment, but there have been very rare reports of such symptoms in patients who have inadvertently missed a dose. Generally, these symptoms are self-limiting and usually resolve within 2 weeks, though in some individuals they may be prolonged (2-3 months or more). It is therefore advised that escitalopram should be gradually tapered when discontinuing treatment over a period of several weeks or months, according to the patient's needs (see "Discontinuation symptoms seen when stopping treatment", **DOSE AND METHOD OF ADMINISTRATION**).



### Sexual dysfunction

Selective serotonin reuptake inhibitors (SSRIs)/serotonin norepinephrine reuptake inhibitors (SNRIs) may cause symptoms of sexual dysfunction. There have been reports of long-lasting sexual dysfunction where the symptoms have continued despite discontinuation of SSRIs/SNRIs.

### ***Effects on ability to drive and use machines***

Although escitalopram has been shown not to affect intellectual function or psychomotor performance, any psychoactive medicinal product may impair judgement or skills. Patients should be cautioned about the potential risk of an influence on their ability to drive a car and operate machinery.

## **DRUG INTERACTIONS <sup>2</sup>**

### **Pharmacodynamic interactions**

#### Contraindicated combinations:

##### *Non-selective irreversible MAOIs*

Cases of serious reactions have been reported in patients receiving an SSRI in combination with a nonselective irreversible monoamine oxidase inhibitor (MAOI), and in patients who have recently discontinued SSRI treatment and have been started on irreversible MAOI treatment (see **CONTRAINDICATIONS**). In some cases, the patient developed serotonin syndrome (see **UNDESIRABLE EFFECTS**).

Escitalopram is contra-indicated in combination with non-selective irreversible MAOIs. Escitalopram may be started 14 days after discontinuing treatment with an irreversible MAOI. At least 7 days should elapse after discontinuing escitalopram treatment, before starting a nonselective irreversible MAOI.

#### Pimozide

Co-administration of a single dose of pimozide 2 mg to subjects treated with racemic citalopram 40 mg/day for 11 days caused an increase in AUC and C<sub>max</sub> of pimozide, although not consistently throughout the study. The co-administration of pimozide and citalopram resulted in a mean increase in the QTc interval of approximately 10 msec.

Due to the interaction noted at a low dose of pimozide, concomitant administration of escitalopram and pimozide is contraindicated.

#### Combinations requiring precautions for use:

##### *Reversible, selective MAO-A inhibitor (moclobemide)*

Due to the risk of serotonin syndrome, the combination of escitalopram with a MAO-A inhibitor is not recommended (see **WARNINGS AND PRECAUTIONS**). If the combination proves necessary, it should be started at the minimum recommended dosage and clinical monitoring is strongly recommended.

Escitalopram may be started at least one day after discontinuing treatment with the reversible MAOI (RIMA), moclobemide.

#### *Selegiline*

In combination with selegiline (irreversible MAO-B inhibitor), caution is required due to the risk of developing serotonin syndrome. Selegiline doses up to 10 mg/day have been safely co-administered with racemic citalopram.

#### *Serotonergic medicinal products*

Co-administration with serotonergic medicinal products e.g. opioids (including tramadol) and triptans (including sumatriptan) may lead to serotonin syndrome.

#### *Medicinal products lowering the seizure threshold*

SSRIs can lower the seizure threshold. Caution is advised when concomitantly using other medicinal products capable of lowering the seizure threshold [e.g. antidepressants (tricyclics, SSRIs) neuroleptics (phenothiazines, thioxanthenes, butyrophenones) mefloquine, bupropion, and tramadol].

#### *Lithium, tryptophan*

There have been reports of enhanced effects when SSRIs have been given together with lithium or tryptophan, therefore concomitant use of SSRIs with these medicinal products should be undertaken with caution.

#### *St. John's Wort*

Concomitant use of SSRIs and herbal remedies containing St. John's Wort (*Hypericum perforatum*) may result in an increased incidence of adverse reactions (see **WARNINGS AND PRECAUTIONS**).

#### *Haemorrhage*

Altered anti-coagulant effects may occur when escitalopram is combined with oral anticoagulants. Patients receiving oral anticoagulant therapy should receive careful coagulation monitoring when escitalopram is started or stopped (see **WARNINGS AND PRECAUTIONS**).

Concomitant use of non-steroidal anti-inflammatory drugs (NSAIDs) may increase bleeding tendency (see **WARNINGS AND PRECAUTIONS**).

### *Alcohol*

No pharmacodynamic or pharmacokinetic interactions are expected between escitalopram and alcohol. However, as with other psychotropic medicinal products, the combination with alcohol is not advisable.

### **Pharmacokinetic interactions**

#### Influence of other medicinal products on the pharmacokinetics of escitalopram

The metabolism of escitalopram is mainly mediated by CYP2C19. CYP3A4 and CYP2D6 may also contribute to the metabolism although to a smaller extent. The metabolism of the major metabolite S-DCT (demethylated escitalopram) seems to be partly catalysed by CYP2D6.

Co-administration of escitalopram with omeprazole (a CYP2C19 inhibitor) resulted in moderate (approximately 50%) increase in the plasma concentrations of escitalopram.

Co-administration of escitalopram with cimetidine (moderately potent general enzyme-inhibitor) resulted in moderate (approximately 70%) increase in the plasma concentrations of escitalopram.

Caution should thus be exercised at the upper end of the dose range of escitalopram when used concomitantly with CYP2C19 inhibitors (e.g. omeprazole, fluoxetine, fluvoxamine, lansoprazole, ticlopidine) and with cimetidine.

A reduction in the dose of escitalopram may be necessary based on clinical judgement.

#### Effect of escitalopram on the pharmacokinetics of other medicinal products

Escitalopram is an inhibitor of the enzyme CYP2D6. Caution is recommended when escitalopram is coadministered with medicinal products that are mainly metabolized by this enzyme, and that have a narrow therapeutic index, e.g. flecainide, propafenone and metoprolol (when used in cardiac failure), or some CNS acting medicinal products that are mainly metabolised by CYP2D6, e.g. antidepressants such as desipramine, clomipramine and nortriptyline or antipsychotics like risperidone, thioridazine and haloperidol. Dosage adjustment may be warranted.

Co-administration with desipramine or metoprolol resulted in a twofold increase in the plasma levels of these two CYP2D6 substrates.

*In vitro* studies have reported that escitalopram may also cause weak inhibition of CYP2C19. Caution is recommended with concomitant use of medicinal products that are metabolised by CYP2C19.

## **UNDESIRABLE EFFECTS <sup>2</sup>**

Adverse reactions are most frequent during the first or second week of treatment and usually decrease in intensity and frequency with continued treatment.

Adverse drug reactions known for SSRIs and also reported for escitalopram in either placebo-controlled clinical studies or as spontaneous post-marketing events are listed below by system organ class and frequency. Frequencies are taken from clinical studies; they are not placebo-corrected.

Frequencies are defined as: very common ( $\geq 1/10$ ), common ( $\geq 1/100$  to  $< 1/10$ ), uncommon ( $\geq 1/1000$  to  $\leq 1/100$ ), rare ( $\geq 1/10000$  to  $\leq 1/1000$ ), very rare ( $\leq 1/10000$ ), or not known (cannot be estimated from the available data).

<b>System organ class</b>	<b>Frequency</b>	<b>Undesirable Effect</b>
Blood and lymphatic system disorders	Not known	Thrombocytopenia
Immune system disorders	Rare	Anaphylactic reaction
Endocrine disorders	Not known	Inappropriate ADH secretion
Metabolism and nutrition disorders	Common	Decreased appetite, increased appetite, weight increased
	Uncommon	Weight decreased
	Not known	Hyponatraemia, anorexia <sup>1</sup>
Psychiatric disorders	Common	Anxiety, restlessness, abnormal dreams Libido decreased Female: anorgasmia
	Uncommon	Bruxism, agitation, nervousness, panic attack, confusional state
	Rare	Aggression, depersonalisation, hallucination
	Not known	Mania, suicidal ideation, suicidal behaviour <sup>2</sup>
Nervous system disorders	Common	Insomnia, somnolence, dizziness, paraesthesia, tremor
	Uncommon	Taste disturbance, sleep disorder, syncope
	Rare	Serotonin syndrome
	Not known	Dyskinesia, movement disorder, convulsion, psychomotor

		restlessness/akathisia <sup>1</sup>
Eye disorders	Uncommon	Mydriasis, visual disturbance
Ear and labyrinth disorders	Uncommon	Tinnitus
Cardiac disorders	Uncommon	Tachycardia
	Rare	Bradycardia
	Not known	Electrocardiogram QT prolonged
Vascular disorders	Not known	Orthostatic hypotension
Respiratory, thoracic and mediastinal disorders	Common	Sinusitis, yawning
	Uncommon	Epistaxis
Gastrointestinal disorders	Very common	Nausea
	Common	Diarrhoea, constipation, vomiting, dry mouth
	Uncommon	Gastrointestinal haemorrhages (including rectal haemorrhage)
Hepatobiliary disorders	Not known	Hepatitis, liver function test abnormal
Skin and subcutaneous tissue disorders	Common	Sweating increased
	Uncommon	Urticaria, alopecia, rash, pruritus
	Not known	Ecchymosis, angioedemas
Musculoskeletal and connective tissue disorders	Common	Arthralgia, myalgia
Renal and urinary disorders	Not known	Urinary retention
Reproductive system and breast disorders	Common	Male: Ejaculation disorder, impotence
	Uncommon	Female: Metrorrhagia, menorrhagia
	Not known	Galactorrhoea Female: postpartum haemorrhage <sup>3</sup> Male: priapism
General disorders and administration site conditions	Common	Fatigue, pyrexia
	Uncommon	Oedema

<sup>1</sup> These events have been reported for the therapeutic class of SSRIs.

<sup>2</sup> Cases of suicidal ideation and suicidal behaviours have been reported during escitalopram therapy or early after treatment discontinuation (see **WARNINGS AND PRECAUTIONS**).

<sup>3</sup> This event has been reported for the therapeutic class of SSRIs/SNRIs (see **WARNINGS AND PRECAUTIONS, USE IN SPECIAL POPULATIONS**).

Cases of QT interval-prolongation and ventricular arrhythmia including torsade de pointes have been reported during the post-marketing period, predominantly in patients of female gender, with hypokalemia or with pre-existing QT interval prolongation or other cardiac diseases (see **CONTRAINDICATIONS, WARNINGS AND PRECAUTIONS, DRUG INTERACTIONS, OVERDOSE** and **PHARMACODYNAMIC AND**

**PHARMACOKINETIC PROPERTIES; Pharmacodynamic effects).** In a double-blind, placebo-controlled ECG study in healthy subjects, the change from baseline in QTc (Fridericia correction) was 4.3 msec at the 10 mg/day dose and 10.7 msec at the 30 mg/day dose.

Epidemiological studies, mainly conducted in patients 50 years of age and older, show an increased risk of bone fractures in patients receiving SSRIs and TCAs. The mechanism leading to this risk is unknown.

Discontinuation symptoms seen when stopping treatment:

Discontinuation of SSRIs/SNRIs (particularly when abrupt) commonly leads to discontinuation symptoms. Dizziness, sensory disturbances (including paraesthesia and electric shock sensations), sleep disturbances (including insomnia and intense dreams), agitation or anxiety, nausea and/or vomiting, tremor, confusion, sweating, headache, diarrhoea, palpitations, emotional instability, irritability and visual disturbances are the most commonly reported reactions. Generally, these events are mild to moderate and are self-limiting, however, in some patients they may be severe and/or prolonged.

It is therefore advised that when escitalopram treatment is no longer required, gradual discontinuation by dose tapering should be carried out (see **DOSE AND METHOD OF ADMINISTRATION** and **WARNINGS AND PRECAUTIONS**).

## **OVERDOSE <sup>2</sup>**

### Toxicity

Clinical data on escitalopram overdose are limited and many cases involve concomitant overdoses of other drugs. In the majority of cases mild or no symptoms have been reported. Fatal cases of escitalopram overdose have rarely been reported with escitalopram alone; the majority of cases have involved overdose with concomitant medications. Doses between 400 and 800 mg of escitalopram alone have been taken without any severe symptoms.

### Symptoms

Symptoms seen in reported overdose of escitalopram include symptoms mainly related to the central nervous system (ranging from dizziness, tremor, and agitation to rare cases of serotonin syndrome, convulsion, and coma), the gastrointestinal system (nausea/vomiting), and the cardiovascular system (hypotension, tachycardia, QT prolongation, and arrhythmia) and electrolyte/fluid balance conditions (hypokalaemia, hyponatraemia).

### Treatment

There is no specific antidote. Establish and maintain an airway, ensure adequate oxygenation and respiratory function. Gastric lavage and the use of activated charcoal should be considered. Gastric lavage should be carried out as soon as possible after oral ingestion. Cardiac and vital signs monitoring are recommended along with general symptomatic supportive measures.

## **PHARMACODYNAMIC AND PHARMACOKINETIC PROPERTIES <sup>2</sup>**

- **Pharmacodynamic effects**

Pharmacotherapeutic group: antidepressants, selective serotonin reuptake inhibitors. ATC-code: N 06 AB 10

### Mechanism of action

Escitalopram is a selective inhibitor of serotonin (5-HT) re-uptake with high affinity for the primary binding site. It also binds to an allosteric site on the serotonin transporter, with a 1000-fold lower affinity. Allosteric modulation of the serotonin transporter enhances binding of escitalopram to the primary binding site, resulting in more complete serotonin reuptake inhibition.

Escitalopram has no or low affinity for a number of receptors including 5-HT<sub>1A</sub>, 5-HT<sub>2</sub>, DA D<sub>1</sub> and D<sub>2</sub> receptors,  $\alpha_1$ ,  $\alpha_2$ -,  $\beta$ -adrenoceptors, histamine H<sub>1</sub>, muscarine cholinergic, benzodiazepine, and opioid receptors.

The inhibition of 5-HT re-uptake is the only likely mechanism of action explaining the pharmacological and clinical effects of escitalopram.

Escitalopram is the S-enantiomer of the racemate (citalopram) and is the enantiomer to which the therapeutic activity is attributed. Pharmacological studies have shown that the R-enantiomer is not inert but counteracts the serotonin-enhancing and consequent pharmacological properties of the S-enantiomer.

### Clinical efficacy

#### *Major Depressive Episodes*

Escitalopram has been found to be effective in the acute treatment of major depressive episodes in three out of four double-blind, placebo-controlled short-term (8-weeks) studies. The antidepressant effect was evident as early as after two weeks for both 10 and 20 mg doses of escitalopram. After 8 weeks of therapy, escitalopram 20 mg was superior

to citalopram 40 mg. A dose-response relationship for escitalopram was clearly seen in the severely depressed patients indicating that they are likely to benefit from a higher dose of escitalopram (20 mg) than the usual starting dose (10 mg).

In a long-term (24-week) double-blind study of escitalopram 10 mg vs citalopram 20 mg, escitalopram was at least as effective as citalopram, and half as many escitalopram patients withdrew because of adverse effects. In a long-term relapse prevention study, 274 patients who had responded during an initial 8-week open label treatment phase with escitalopram 10 or 20 mg/day, were randomized to continuation with escitalopram at the same dose, or to placebo, for up to 36 weeks. In this study, patients receiving continued escitalopram experienced a significantly longer time to relapse over the subsequent 36 weeks compared to those receiving placebo.

#### *Panic disorder*

The efficacy of escitalopram in the treatment of panic disorder was demonstrated in a 10-week flexible dose study that compared 5-20 mg/day escitalopram to placebo and racemic citalopram 10-40 mg/day.

Escitalopram was statistically significantly superior to placebo as demonstrated by measurement of panic attack frequency, severity, duration, and accompanying symptoms.

Citalopram was also efficacious compared to placebo in the majority of efficacy measures. For the majority of treatment emergent adverse events reported for at least 5% of patients, reporting frequencies were higher in the citalopram group than in the escitalopram group.

#### *Generalised anxiety disorder*

Escitalopram in doses of 10 and 20 mg/day was effective in four out of four placebo-controlled studies. 5 mg/day was not effective.

In pooled data from three studies with similar 8-week design and comprising 421 escitalopram treated patients and 419 placebo-treated patients, there were 47.5% vs 28.9% responders and 37.1% vs 20.8% remitters ( $P \leq 0.001$ ). Sustained effect was seen from week 1. In the fixed-dose study, over a 12-week period, escitalopram in doses of 10 and 20 mg/day was statistically significantly more effective than placebo on the primary measure of efficacy, with an effect size at least as high as that of the reference treatment paroxetine. The 5 mg dose of escitalopram was numerically, but not statistically significantly, superior to placebo. 10 mg escitalopram was statistically significantly superior to the reference treatment paroxetine (LOCF) based on the HAM-A and CGI-I.



Transient discontinuation symptoms were seen, with significantly higher levels for paroxetine than for escitalopram 5, 10, and 20 mg/day ( $P \leq 0.01$ ).

Maintenance of efficacy of escitalopram 20 mg/day was demonstrated in a 24-76 week, randomized, maintenance of efficacy study in 373 patients who had responded during the initial 12-week open label treatment.

#### *Obsessive-compulsive disorder*

In the short-term (12 weeks), 20 mg/day escitalopram separated from placebo on the Y-BOCS total score and the Y-BOCS subscales scores of obsessions and rituals, and also on the NIMHOCS total score. In the observed cases analysis, both 10 mg/day ( $p=0.005$ ) and 20 mg/day ( $p<0.001$ ) escitalopram were effective.

The long-term maintenance effect has been demonstrated in two studies; a 24 weeks placebo-controlled, dose-finding study and a 16 + 24 weeks placebo-controlled, relapse-prevention study.

In the long-term, 24-week, placebo-controlled, dose-finding study, both 10 mg/day ( $p<0.05$ ) and 20 mg/day ( $p<0.01$ ) escitalopram were significantly more effective than placebo, as measured by the primary outcome measure, the Y-BOCS total, as well as on the secondary subscales of the Y-BOCS obsessions and rituals, and the NIMH-OCS (10 mg/day ( $p<0.01$ ) and 20 mg/day ( $p<0.001$ ) escitalopram).

Maintenance of efficacy and prevention of relapse was demonstrated for 10 and 20 mg/day escitalopram in patients who responded to escitalopram in a 16-week open treatment phase and who were entering a 24-week (double blind placebo-controlled randomized) relapse prevention trial. In the observed relapse prevention trial, both 10 mg/day ( $p=0.014$ ) and 20 mg/day ( $p<0.001$ ) escitalopram showed significantly fewer relapses.

A significant and beneficial effect of escitalopram on quality of life was observed (as assessed by the SF36 and SDS) in the OCD studies with escitalopram.

- **Pharmacokinetics**

#### Absorption

Absorption is almost complete and independent of food intake. Mean time to maximum concentration (mean  $T_{max}$ ) is 4 hours after multiple dosing. As with racemic citalopram, the absolute bioavailability of escitalopram is expected to be about 80%.

### Distribution

The apparent volume of distribution ( $V_{d,\beta}/F$ ) after oral administration is about 12 to 26 L/kg. The plasma protein binding is below 80% for escitalopram and its main metabolites.

### Biotransformation

Escitalopram is metabolised in the liver to the demethylated and didemethylated metabolites. Both of these are pharmacologically active. Alternatively, the nitrogen may be oxidised to form the Noxide metabolite. Both parent substance and metabolites are partly excreted as glucuronides. After multiple dosing the mean concentrations of the demethyl and didemethyl metabolites are usually 28-31% and <5%, respectively, of the escitalopram concentration.

Biotransformation of escitalopram to the demethylated metabolite is mediated primarily by CYP2C19. Some contribution by the enzymes CYP3A4 and CYP2D6 is possible.

### Elimination

The elimination half-life ( $t_{1/2\beta}$ ) after multiple dosing is about 30 hours and the oral plasma clearance ( $Cl_{oral}$ ) is about 0.6 L/min. The major metabolites have a significantly longer half-life.

Escitalopram and major metabolites are assumed to be eliminated by both the hepatic (metabolic) and the renal routes, with the major part of the dose excreted as metabolites in the urine.

### Linearity

There is linear pharmacokinetics. Steady-state plasma levels are achieved in about 1 week. Average steady-state concentrations of 50 nmol/L (range 20 to 125 nmol/L) are achieved at a daily dose of 10 mg.

### Elderly patients (> 65 years)

Escitalopram appears to be eliminated more slowly in elderly patients compared to younger patients. Systemic exposure (AUC) is about 50 % higher in elderly compared to young healthy volunteers (see **DOSE AND METHOD OF ADMINISTRATION**).

### Reduced hepatic function

In patients with mild or moderate hepatic impairment (Child-Pugh Criteria A and B), the half-life of escitalopram was about twice as long and the exposure was about 60% higher than in subjects with normal liver function (see **DOSE AND METHOD OF ADMINISTRATION**).

### Reduced renal function

With racemic citalopram, a longer half-life and a minor increase in exposure have been observed in patients with reduced kidney function ( $CL_{cr}$  10-53 ml/min). Plasma concentrations of the metabolites have not been studied, but they may be elevated (see **DOSE AND METHOD OF ADMINISTRATION**).

### Polymorphism

It has been observed that poor metabolisers with respect to CYP2C19 have twice as high a plasma concentration of escitalopram as extensive metabolisers. No significant change in exposure was observed in poor metabolisers with respect to CYP2D6 (see **DOSE AND METHOD OF ADMINISTRATION**).

## **PRECLINICAL SAFETY <sup>2</sup>**

It is reported that no complete conventional battery of preclinical studies was performed with escitalopram since the bridging toxicokinetic and toxicological studies conducted in rats with escitalopram and citalopram reported a similar profile. Therefore, all the citalopram information can be extrapolated to escitalopram.

In comparative toxicological study reports in rats, escitalopram and citalopram caused cardiac toxicity, including congestive heart failure, after treatment for some weeks, when using dosages that caused general toxicity. The cardiotoxicity seemed to correlate with peak plasma concentrations rather than to systemic exposures (AUC).

Peak plasma concentrations at no-effect-level were in excess (8-fold) of those achieved in clinical use, while AUC for escitalopram was only 3- to 4-fold higher than the exposure achieved in clinical use. For citalopram AUC values for the S-enantiomer were 6- to 7-fold higher than exposure achieved in clinical use. The findings are probably related to an exaggerated influence on biogenic amines i.e. secondary to the primary pharmacological effects, resulting in haemodynamic effects (reduction in coronary flow) and ischaemia. However, the exact mechanism of cardiotoxicity in rats is not clear. Clinical experience reports with citalopram and the clinical trial experience reports with escitalopram do not indicate that these findings have a clinical correlate. Increased content of phospholipids has been reported in some tissues e.g. lung, epididymides and liver after treatment for longer periods with escitalopram and citalopram in rats. Reports in the epididymides and liver were seen at exposures similar to that in man.

The effect is reversible after treatment cessation. Accumulation of phospholipids (phospholipidosis) in animals has been observed in connection with many cationic

amphiphilic medicines. It is not known if this phenomenon has any significant relevance for man.

In the developmental toxicity study reports in the rat embryotoxic effects (reduced foetal weight and reversible delay of ossification) were reported at exposures in terms of AUC in excess of the exposure achieved during clinical use. No increased frequency of malformations was noted. A pre- and postnatal study reported reduced survival during the lactation period at exposures in terms of AUC in excess of the exposure achieved during clinical use.

Animal data reported that citalopram induces a reduction of fertility index and pregnancy index, reduction in number in implantation and abnormal sperm at exposure well in excess of human exposure. No animal data related to this aspect are available for escitalopram.

## **STORAGE**

Store at temperatures not exceeding 30°C.

KEEP ALL MEDICINES OUT OF THE REACH OF CHILDREN.

## **SHELF LIFE**

24 Months

## **SUPPLY**

10 tablets of **CILENTRA** is **packed** blister pack. Such 3 blister of 10 tablets are packed in a show box along with pack insert

## **MANUFACTURED BY:**

SUN PHARMACEUTICAL INDUSTRIES LIMITED

Village Ganguwala, Paonta Sahib-173025, District Sirmour,  
Himachal Pradesh, INDIA

## **REFERENCES**

1. Escitalopram oxalate: National Center for Biotechnology Information, PubChem Compound Summary, CID=146571, accessed online from <https://pubchem.ncbi.nlm.nih.gov/compound/Escitalopram-oxalate>
2. Prescribing information of Lepax (Escitalopram) 10 mg film-coated tablets, H. Lundbeck A/S, Denmark, July 2021.

*Information Compiled in January 2024*

***Lepax** is trademark of **H. Lundbeck A/S** and this is not trademark of Sun Pharmaceutical Industries Ltd. The maker of this brand is not affiliated with and does not endorse Sun Pharmaceutical Industries Ltd or its products.*